

# **HYUPSHIN FLANGES**



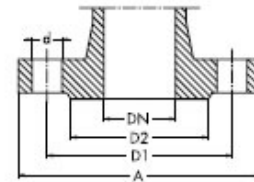
# **Flanges**

# **Flansche**

# **Brides**

**flange dimensions and drilling to DIN 2501**

DN = diameter nominal (size)  
 A = flange  $\varnothing$   
 D<sub>2</sub> = diameter of raised face  $\varnothing$   
 D<sub>1</sub> = diameter of bolt circle  $\varnothing$   
 n = number of bolts  
 d = diameter of bolt holes  $\varnothing$   
 □ = not standardized



copyright 2003 maryland metrics

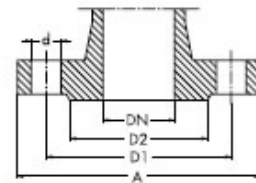
DN		PN 6	PN 10	PN 16	PN 25	PN 40	PN63	PN 100	PN 160	PN 250	PN 320
		DIN 2631	DIN 2632	DIN 2633	DIN 2634	DIN 2635	DIN 2636	DIN 2637	DIN 2638	DIN 2628	DIN 2629
10	A	75	90	90	90	90	100	100	100	125	125
	D <sub>1</sub>	50	60	60	60	60	70	70	70	85	85
	D <sub>2</sub>	35	40	40	40	40	40	40	40	40	40
	n x d	4 x 11	4 x 14	4 x 14	4 x 14	4 x 14	4 x 14	4 x 14	4 x 14	4 x 14	4 x 18
15	A	80	95	95	95	95	105	105	105	130	130
	D <sub>1</sub>	55	65	65	65	65	75	75	75	90	90
	D <sub>2</sub>	40	45	45	45	45	45	45	45	45	45
	n x d	4 x 11	4 x 14	4 x 14	4 x 14	4 x 14	4 x 14	4 x 14	4 x 14	4 x 14	4 x 18
20	A	90	105	105	105	105					
	D <sub>1</sub>	65	75	75	75	75					
	D <sub>2</sub>	50	58	58	58	58					
	n x d	4 x 11	4 x 14	4 x 14	4 x 14	4 x 14					
25	A	100	115	115	115	115	140	140	140	150	160
	D <sub>1</sub>	75	85	85	85	85	100	100	100	105	115
	D <sub>2</sub>	60	68	68	68	68	68	68	68	68	68
	n x d	4 x 11	4 x 14	4 x 14	4 x 14	4 x 14	4 x 18	4 x 18	4 x 18	4 x 22	4 x 22
32	A	120	140	140	140	140					
	D <sub>1</sub>	90	100	100	100	100					
	D <sub>2</sub>	70	78	78	78	78					
	n x d	4 x 14	4 x 18	4 x 18	4 x 18	4 x 18					
40	A	130	150	150	150	150	170	170	170	185	195
	D <sub>1</sub>	100	110	110	110	110	125	125	125	135	145
	D <sub>2</sub>	80	88	88	88	88	88	88	88	88	88
	n x d	4 x 14	4 x 18	4 x 18	4 x 18	4 x 18	4 x 22	4 x 22	4 x 22	4 x 26	4 x 26
50	A	140	165	165	165	165	180	195	195	200	210
	D <sub>1</sub>	110	125	125	125	125	135	145	145	150	160
	D <sub>2</sub>	90	102	102	102	102	102	102	102	102	102
	n x d	4 x 14	4 x 18	4 x 18	4 x 18	4 x 18	4 x 22	4 x 26	4 x 26	8 x 26	8 x 26
65	A	160	185	185	185	185	205	220	220	230	255
	D <sub>1</sub>	130	145	145	145	145	160	170	170	180	200
	D <sub>2</sub>	110	122	122	122	122	122	122	122	122	122
	n x d	4 x 14	4 x 18	4 x 18	8 x 18	8 x 18	8 x 22	8 x 26	8 x 26	8 x 26	8 x 30
80	A	190	200	200	200	200	215	230	230	255	275
	D <sub>1</sub>	150	160	160	160	160	170	190	190	200	220
	D <sub>2</sub>	128	138	138	138	138	138	138	138	138	138
	n x d	4 x 18	8 x 18	8 x 18	8 x 18	8 x 18	8 x 22	8 x 26	8 x 26	8 x 30	8 x 30
100	A	210	220	220	235	235	250	265	265	300	335
	D <sub>1</sub>	170	180	180	190	190	200	210	210	235	265
	D <sub>2</sub>	148	158	158	162	162	162	162	162	162	162
	n x d	4 x 18	8 x 18	8 x 18	8 x 22	8 x 22	8 x 26	8 x 30	8 x 30	8 x 33	8 x 36
125	A	240	250	250	270	270	295	315	315	340	380
	D <sub>1</sub>	200	210	210	220	220	240	250	250	275	310
	D <sub>2</sub>	178	188	188	188	188	188	188	188	188	188
	n x d	8 x 18	8 x 18	8 x 18	8 x 26	8 x 26	8 x 30	8 x 33	8 x 33	12 x 33	12 x 36
150	A	265	285	285	300	300	345	355	355	390	425
	D <sub>1</sub>	225	240	240	250	250	280	290	290	320	350
	D <sub>2</sub>	202	212	212	218	218	218	218	218	218	218
	n x d	8 x 18	8 x 22	8 x 22	8 x 26	8 x 26	8 x 33	12 x 33	12 x 33	12 x 36	12 x 39
(175)	A		315	315	330	350	375	385	390	430	485
	D <sub>1</sub>		270	270	280	295	310	320	320	355	400
	D <sub>2</sub>		242	242	248	260	260	260	260	260	260
	n x d		8 x 22	8 x 22	12 x 26	12 x 30	12 x 33	12 x 33	12 x 36	12 x 39	12 x 42
200	A	320	340	340	360	375	415	430	430	485	525
	D <sub>1</sub>	280	295	295	310	320	345	360	360	400	440
	D <sub>2</sub>	258	268	268	278	285	285	285	285	285	285
	n x d	8 x 18	8 x 22	12 x 22	12 x 26	12 x 30	12 x 36	12 x 36	12 x 36	12 x 42	16 x 42
250	A	375	395	405	425	450	470	505	515	585	640
	D <sub>1</sub>	335	350	355	370	385	400	430	430	490	540
	D <sub>2</sub>	312	320	320	335	345	345	345	345	345	345
	n x d	12 x 18	12 x 22	12 x 26	12 x 30	12 x 33	12 x 36	12 x 39	12 x 42	16 x 48	16 x 52

dimensions in mm

continued on the next page ►

**flange dimensions and drilling to DIN 2501**

DN = diameter nominal (size)  
 A = flange  $\varnothing$   
 D<sub>2</sub> = diameter of raised face  $\varnothing$   
 D<sub>1</sub> = diameter of bolt circle  $\varnothing$   
 n = number of bolts  
 d = diameter of bolt holes  $\varnothing$   
 □ = not standardized



copyright 2003 maryland metrics

DN		PN 6 DIN 2631	PN 10 DIN 2632	PN 16 DIN 2633	PN 25 DIN 2634	PN 40 DIN 2635	PN63 DIN 2636	PN 100 DIN 2637	PN 160 DIN 2638	PN 250 DIN 2628	PN 320 DIN 2629
300	A	440	445	460	485	515	530	585	585	690	
	D <sub>1</sub>	395	400	410	430	450	460	500	500	590	
	D <sub>2</sub>	365	370	378	395	410	410	410	410	410	
	n x d	12 x 22	12 x 22	12 x 26	16 x 30	16 x 33	16 x 36	16 x 42	16 x 42	16 x 52	
350	A	490	505	520	555	580	600	655			
	D <sub>1</sub>	445	460	470	490	510	525	560			
	D <sub>2</sub>	415	430	438	450	465	465	465			
	n x d	12 x 22	16 x 22	16 x 26	16 x 33	16 x 36	16 x 39	16 x 48			
400	A	540	565	580	620	660	670	715			
	D <sub>1</sub>	495	515	525	550	585	585	620			
	D <sub>2</sub>	465	482	490	505	535	535	535			
	n x d	16 x 22	16 x 26	16 x 30	16 x 36	16 x 39	16 x 42	16 x 48			
(450)	A	595	615	640		685					
	D <sub>1</sub>	550	565	585		610					
	D <sub>2</sub>	520	532	550		560					
	n x d	16 x 22	20 x 26	20 x 30		20 x 39					
500	A	645	670	715	730	755	800	870			
	D <sub>1</sub>	600	620	650	660	670	705	760			
	D <sub>2</sub>	570	585	610	615	615	615	615			
	n x d	20 x 22	20 x 26	20 x 33	20 x 36	20 x 42	20 x 48	20 x 56			
600	A	755	780	840	845	890	930	990			
	D <sub>1</sub>	705	725	770	770	795	820	875			
	D <sub>2</sub>	670	685	725	720	735	735	735			
	n x d	20 x 26	20 x 30	20 x 36	20 x 39	20 x 48	20 x 56	20 x 62			
700	A	860	895	910	960	995	1045	1145			
	D <sub>1</sub>	810	840	840	875	900	935	1020			
	D <sub>2</sub>	775	800	795	820	840	840	840			
	n x d	24 x 26	24 x 30	24 x 36	24 x 42	24 x 48	24 x 56	24 x 70			
800	A	975	1015	1025	1085	1140	1165				
	D <sub>1</sub>	920	950	950	990	1030	1050				
	D <sub>2</sub>	880	905	900	930	960	960				
	n x d	24 x 30	24 x 33	24 x 39	24 x 48	24 x 56	24 x 62				
900	A	1075	1115	1125	1185	1250	1285				
	D <sub>1</sub>	1020	1050	1050	1090	1140	1170				
	D <sub>2</sub>	980	1005	1000	1030	1070	1070				
	n x d	24 x 30	28 x 33	28 x 39	28 x 48	28 x 56	28 x 62				
1000	A	1175	1230	1255	1320	1360	1415				
	D <sub>1</sub>	1120	1160	1170	1210	1250	1290				
	D <sub>2</sub>	1080	1110	1115	1140	1180	1180				
	n x d	28 x 30	28 x 36	28 x 42	28 x 56	28 x 56	28 x 70				
1200	A	1405	1455	1485	1530	1575	1665				
	D <sub>1</sub>	1340	1380	1390	1420	1460	1530				
	D <sub>2</sub>	1295	1330	1330	1350	1380	1390				
	n x d	32 x 33	32 x 39	32 x 48	32 x 56	32 x 62	32 x 78				
1400	A	1630	1675	1685	1755	1795					
	D <sub>1</sub>	1560	1590	1590	1640	1680					
	D <sub>2</sub>	1510	1535	1530	1560	1600					
	n x d	36 x 36	36 x 42	36 x 48	36 x 62	36 x 62					
1600	A	1830	1915	1930	1975	2025					
	D <sub>1</sub>	1760	1820	1820	1860	1900					
	D <sub>2</sub>	1710	1760	1750	1780	1815					
	n x d	40 x 36	40 x 48	40 x 56	40 x 62	40 x 70					
1800	A	2045	2115	2130	2195						
	D <sub>1</sub>	1970	2020	2020	2070						
	D <sub>2</sub>	1920	1960	1950	1985						
	n x d	44 x 39	44 x 48	44 x 56	44 x 70						
2000	A	2265	2325	2345	2425						
	D <sub>1</sub>	2180	2230	2230	2300						
	D <sub>2</sub>	2125	2170	2150	2210						
	n x d	48 x 42	48 x 48	48 x 62	48 x 70						

dimensions in mm

**We Supply following steel flanges in norms:**

**In DIN-Standard:**

Blind Flanges: DIN 2527 PN 6 / PN 10 / PN 16 / PN 25 / PN 40 / PN 64 / PN 100

Welding Flanges: DIN 2573 PN 6 / DIN 2576 PN 10 / DIN 2501 / DIN 2502 / DIN 2503 / DIN 2543 PN16

Welding Neck Flanges: DIN 2631 PN 6 / DIN 2632 PN 10 / DIN 2633 PN 16 / DIN 2634 PN 25 / DIN 2635 PN 40

Lapped Flanges: DIN 2641 PN 6 / DIN 2642 PN 10

Threaded Flanges: DIN 2565 PN 6 / DIN 2566 PN 16

**In UNI-Standard:**

Blind Flanges: UNI 6091 PN 6 / UNI 6092 PN 10 / UNI 6093 PN 16 / UNI 6094 PN 25 / UNI 6095 PN 40

Welding Flanges: UNI 2276 PN 6 / UNI 2277 PN 10 / UNI 2278 PN 16 / UNI 6083 / UNI 6084

Welding Neck Flanges: UNI 2280 PN 6 / UNI 2281 PN 10 / UNI 2282 PN 16 / UNI 2283 PN 25 / UNI 2284 PN 40

Lapped Flanges: UNI 6088 PN 6 / UNI 6089 PN 10 / UNI 6090 PN 16

Threaded Flanges: UNI 2253 PN 6 / UNI 2254 PN 16

**In EN 1092-1 Standard:**

Blind Flanges: Type 05 PN 6 / PN 10 / PN 16 / PN 25 / PN 40

Welding Flanges: Type 01 PN 6 / PN 10 / PN 16 / PN 25 / PN 40

Welding Neck Flanges: Type 11 PN 6 / PN 10 / PN 16 / PN 25 / PN 40

Lapped Flanges: Type 02 PN 6 / PN 10 / PN 16

Threaded Flanges: Type 13 PN 6 / PN 16

**Raw Material for Carbon Steel:**

European Norms: C22.8, RSt 37-2, S235JRG2, C21, P245GH, P250GH, P265GH

ASTM Norms: A105, A350

**We provide all flanges according to your specifications and drawings, we delivery flanges to all ports where you in anywhere.**

**JINAN HYUPSHIN FLANGES CO., LTD**

No6, Nanbei Road, Niupai, Mingshui,  
Zhangqiu City, Shandong,  
China - 250 200

**President** : Mr. Guo Zhaoji

**Director** : Mr. Hong Songjo

Tel : + 86 531 832 945 52

Fax : + 86 531 832 918 78

**Marketing Director**: Mr. Austin. Guo

Tel : + 86 531 836 354 21

Fax : + 86 531 832 977 28

Email: austin@hyupshin.cn

Skype : iguorui

**For Marketing & Products enquiries:**

sale@hyupshin.cn

[www.forged-flange.com](http://www.forged-flange.com)

[www.hyupshin.cn](http://www.hyupshin.cn)